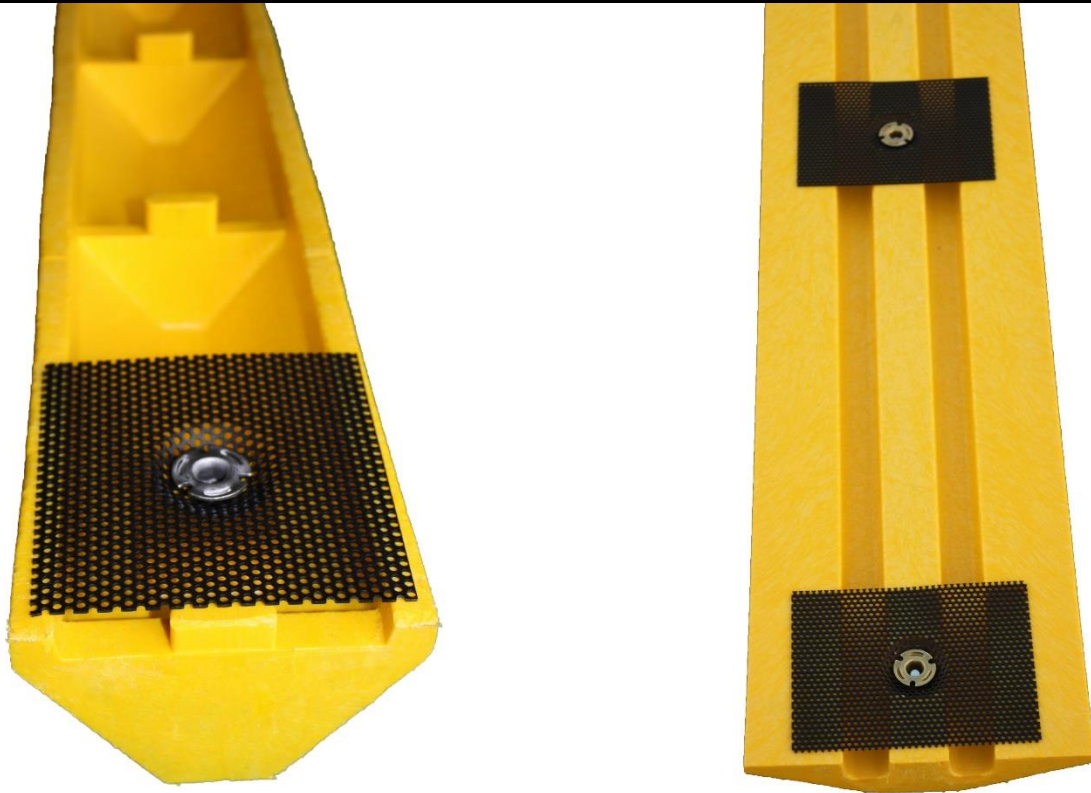


ANCHOR PLATE

INSTALLATION INSTRUCTIONS



The photos above show how Plastics-R-Unique mounts the anchor plate system to the recycled plastic speed bumps and parking blocks.

To Install:

- Mount directly onto **CONCRETE** surface only. Concrete can NOT be Seal Coated!



**Caution!! Not suitable for use on asphalt.
Installing on any surface other than
concrete, will void the warranty!**

- Make sure concrete surface is clean and dry
- Apply 2-3 oz. of two-part epoxy to the anchor plate
- Set into place
- Allow time to dry per epoxy instructions